



**ALASKA DIVISION OF HOMELAND SECURITY &
EMERGENCY MANAGEMENT**
SITUATION REPORT 24-030 • January 30, 2024



Toll-Free 1.800.478.2337

Anchorage Area 907.428.7000

SEOC 907.428.7100

<p><u>SEOC Preparedness Level</u> Level 1 – Routine Operations</p>	<p>http://ready.alaska.gov</p>	<p><u>National Terrorism Advisory System:</u> Read the NTAS Bulletin here</p>
<p>Maritime Security (MARSEC) Level: 1- Minimum Appropriate Security Measures</p>	<p>WHO Novel Coronavirus Pandemic (COVID-19): 2019 Novel Coronavirus</p>	<p><u>Alaska Military Installation Force Protection Level:</u> FPCON Bravo</p>

(Significant changes from previous situation reports are red.)

Significant Issues:

Chevak – Building Fire

SEOC was notified of a large structure fire in the community at the hardware store that affected community power and lead to evacuations of nearby buildings. SEOC contacted the community and multiple state agencies. No injuries were reported. There have been no requests made for assistance. The SEOC will continue the monitor the event.

Quinhagak Power Outage Disaster

State Individual Assistance application hotline and website is open for Quinhagak residents at <https://www.ready.alaska.gov/Recovery/IA> or by phone 1 (844) 445-7131. The deadline to apply for State Individual Assistance is March 2, 2024.

State of Alaska Department of Health (DOH)

The DOH stands ready to assist with all aspects of public health and, in the event of a public health emergency, is supported by the SEOC and other state departments as required.

For current information, see: <https://health.alaska.gov/dph/Pages/default.aspx>
<https://health.alaska.gov/dph/Emergency/Pages/prepared/default.aspx>

NTAS Bulletin

The U.S. Department of Homeland Security issued an updated National Terrorism Advisory Bulletin on May 24, 2023. The current and expired bulletins can be viewed at the below link.

<https://www.dhs.gov/national-terrorism-advisory-system>

Travel Alerts and Conditions

- Thompson Pass Closure (Richardson Hwy MP 12-65) due to snow, blowing snow, and limited visibility.
- Haines Hwy closed at MP 20 due to avalanche.
- Klondike Hwy is closed due to black-ice and high avalanche hazard.

For current driving conditions, dial 511 or visit: <https://511.alaska.gov/>

Barry Arm Landslide / Tsunami Risk

For the latest information on the Barry Arm Landslide and Tsunami risk, click here: <https://dggs.alaska.gov/hazards/barry-arm-landslide.html>

Earthquakes

United States Geological Service (USGS) Earthquake Information: <http://earthquake.usgs.gov/>
National Tsunami Warning Center: <http://tsunami.gov/>

Alaska Volcanoes

Kanaga Alert Level **Advisory** and Aviation Color Code: **Yellow**
Great Sitkin Alert Level: **Watch** and Aviation Color Code: **Orange**
Shishaldin Alert Level: **Advisory** and Aviation Color Code: **Yellow**

For Alaska Volcano updates, go to: <https://www.avo.alaska.edu/>

Air Quality Index (AQI) Advisories

For the most up-to-date Air Quality Index Advisories:
<http://dec.alaska.gov/Applications/Air/airtoolsweb/Home/Index>

Spills of Oil and Hazardous Substances

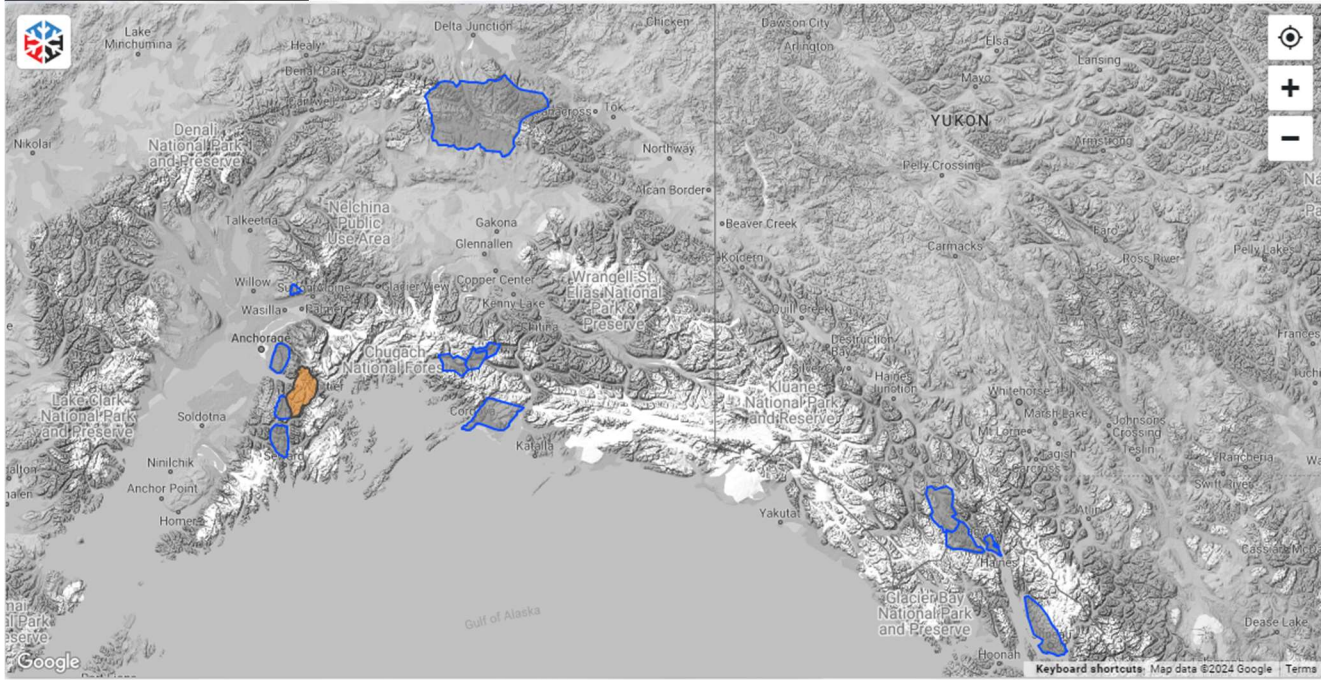
The Alaska Division of Environmental Conservation (ADEC) Spill Prevention and Response page is located at:
<https://dec.alaska.gov/spar/>

Alaska Cyber Security Information

State Employees may sign up for cybersecurity notifications and alerts at
<https://oit.alaska.gov/security>

Cybersecurity and Infrastructure Security Agency (CISA)-Cybersecurity Services and Tools:
www.cisa.gov/free-cybersecurity-services-and-tools

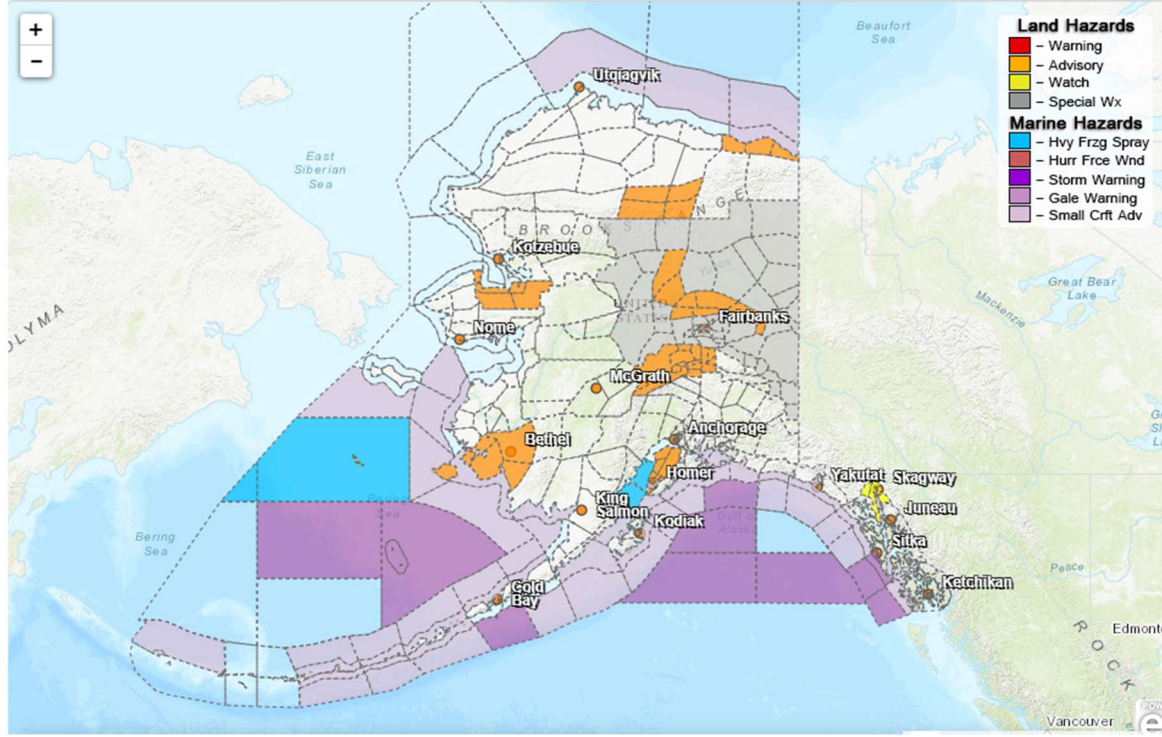
Avalanche Hazards:



- Turnagain Pass – Considerable at all elevations.
- All other area, no updates available.

For more information and the most current avalanche conditions, go to <https://alaskasnow.org>

Significant Weather:



Flood Advisory

- **Ketchikan Gateway Borough** – Remains in effect until noon today.
- **City and Borough of Juneau** – In effect until 2:30 PM AKST this afternoon.
- **Glacier Bay** – in effect until 1030 AM AKST this morning.

Wind Chill Advisory

- **Central Brooks Range; White Mountains and High Terrain South of the Yukon River** - In effect until 3 AM AKST Wednesday
- **Northern Seward Peninsula; Northern Denali Borough and Southern Denali Borough** – In effect until Noon AKST today.

Winter Weather Advisory

- **Eastern Beaufort Sea Coast** – In effect until 6 AM AKST Wednesday morning.
- **Dalton Highway Summits** – in effect until 3 AM AKST Wednesday morning.
- **Kuskokwim Delta Coast** - in effect from 7 PM this evening to 5 AM AKST Wednesday.
- **Western Kenai Peninsula** – in effect until Noon AKST today.

Winter Storm Watch

- **Municipality of Skagway; Haines Borough and Klukwan** – in effect from Wednesday morning through Wednesday evening.

Special Weather Statement

- **Pribilof Islands** – strong winds combined with periods of heavy snow through this evening.
- **Fortymile Country, Upper Tanana Valley, Delta Junction** – Snow across the interior through Tuesday.
- **South Slopes of The Eastern Brooks Range; South Slopes Of The Central Brooks Range; Upper Koyukuk Valley; Dalton Highway Summits; Yukon Flats; White Mountains and High Terrain South of the Yukon River; Upper Chena River Valley; Tanana Flats; Eielson AFB and Salcha; Goldstream Valley and Nenana Hills; Chatanika River Valley; Two Rivers; Fairbanks Metro Area; Nenana; Central Interior; Northern Denali Borough** – another arctic blast Tuesday night unto the weekend.

For more information and the most current weather, Watches / Warnings / Advisories go to:

<https://www.weather.gov/arh/>

The Next Situation Report will be **January 31, 2024**. A significant change in the situation or the threat level will prompt an interim report. This report is posted on the internet at

<https://ready.alaska.gov/sitrep>.

To register for email distribution, go to <http://list.state.ak.us/mailman/listinfo/dhsem.situation.report>.

Direct questions regarding this report to the SEOC at 907-428-7100 or seoc@alaska.gov.